

GCC

RXII SERIES

A Top Notch Cutting Plotter for Professional Sign Makers



Advanced features:

Multiple Pressure Setting Pinch Rollers (Patented)

- Heavy: Sandblast Mask, Reflective Film
- Medium: Vinyl
- Light: Window Tint Film

Advanced Driver Function

- Multiple Parameter Settings by Pen
- Die Cut

Auto Cut Off Function

This feature allows users to set the cutter to cut off the media after the completion of each job making it easy to set up an unattended workflow for mass production.

Ethernet Connection

Network connection enables multiple RXII units to be operated by one PC and multiple PCs to share a single unit.

Enhanced AAS II

RXII series features Automatic-Aligning System (AAS II) to guarantee precise contour cutting by automatically detecting the registration marks on digitally produced images.

Creasing Ability

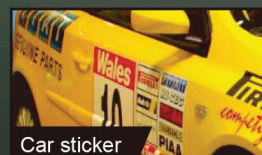
Equipped with the dual tool holders with creasing tool and blade, RXII-61 (Creasing) machine offers cardstock creasing and cutting to make small volume of paper boxes.

Section Cutting

RXII divides the long plot data into sectional output jobs to gain higher cutting quality and increase precision.

Auto Rotation

RXII detect the unique registration marks to distinguish material feeding direction and rotate cutting content automatically.



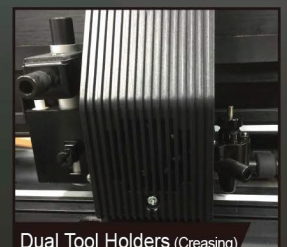
Car sticker



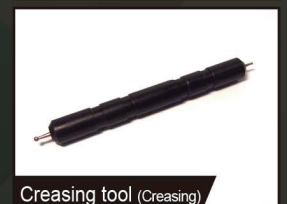
Window film



Reflective film



Dual Tool Holders (Creasing)



Creasing tool (Creasing)

- 10 meter tracking guaranteed
- Triple port, including USB, RS232 and Ethernet
- Up to 600 grams cutting force
- Up to 1530 mm (60 in.) per second cutting speed
- Can work with up to 0.8 mm (0.03 in.) thick material

RXII SERIES

Model Number	RX II-61 (Creasing)	RXII-61	RXII-101S	RXII-132S	RXII-183S	
Operational Method	Roller -Type					
Max. Cutting Width	536 mm (21in.)	610 mm (24in.)	1016 mm (40in.)	1320 mm (52in.)	1830 mm (72in.)	
Max. Cutting Length	50m (164 ft)					
Max. Media Loading Width	642 mm (25.28in.)	810 mm (31.88in.)	1326 mm (52.2in.)	1635 mm (64.37in.)	2145 mm (84.44in.)	
Min. Media Loading Width	50 mm (1.97in.)					
Number of Pinch Rollers	3		4		5	
Acceptable Material Thickness	0.8 mm (0.03")					
Drive Motor	DC Servo Control					
Cutting Force	5 ~ 600 g					
Max. Cutting Speed	1530 mm/sec (60 ips) (at 45° direction)					
Acceleration	4.2 G (gravity)					
Offset	0 ~ 1.0 mm (with an increase of 0.025 mm)					
Memory Buffer	16 MB					
Interfaces	USB 2.0 (Full Speed), Serial (RS-232C) and Ethernet					
Type of Command	HP-GL, HP-GL/2					
Mechanical Resolution	0.006 mm					
Software Resolution	0.025 mm					
Distance Accuracy	± 0.254 mm or ± 0.1% of move, whichever is greater					
Repeatability	± 0.1 mm					
Automatic-Aligning System	Yes, including Segmental Positioning and Auto Rotation functions					
Over Cut	Yes					
Curve & Arc Smoothing	Yes					
Configurable Origin	Yes					
Test Cut Capability	Yes					
Tangential Mode	Yes					
Repeat	Yes					
Copy	Yes					
Pouncing	Optional					
Control Panel	LCD (20 digits x 2 lines), 15 Keys, 1 Power LED, 1 Green LED					
Diameter of Blade	2.5 mm					
Power Supply	100 ~ 240 VAC 50/60 Hz (auto switching)					
Power Consumption	250 Watts					
Dimension	(WxDxH) mm	1098 * 479 * 437		1614 * 651 * 1147	1923 * 651 * 1147	2433 * 756 * 1147
	(WxDxH) in.	43.2 * 18.8 * 17.2		63.5 * 23.8 * 45.2	75.7 * 23.8 * 45.2	95.8 * 29.8 * 45.2
Net Weight	25.5 kg (56 lb)	25 kg (55 lb)	61.8 kg (136.2 lb)	71.5 kg (157.6 lb)	82 kg (180.8 lb)	
Auto Cut Off	Standard					
Max. Cut Off Width	642 mm	696 mm	1107 mm	1417 mm	1927 mm	
Stand	Optional		Standard			
Media Basket	Optional					
Operation Environment	Temperature	15° C ~ 30° C / 60° F ~ 86° F				
	Humidity	25 % ~ 75 %				

- ※ Compatible with Windows 7 and above & MAC OS X 10.6 and above. (*Purchase "Sure Cuts A Lot" software to work with Mac OS.) (Sure Cut A Lot does not support Creasing function)
- ※ The specification and data sheet may vary with different materials used. In order to obtain the best output quality, please maintain the machine regularly and properly.
- ※ GCC reserves the right to change the specifications at any time without notice.
- ※ GCC certified material in tracking is Avery MPI 3000.
- ※ The above listed specification values are effective only when operated with media certified by GCC.



www.GCCworld.com



GCC Headquarters	4F-1., No.236, Fude 2nd Rd., Xizhi Dist., New Taipei City 22151, Taiwan	886-2-6616-6692	Fax : 886-2-2694-6875
GCC China	No.1, Chen Feng Road, Yushan, Kunshan, Jiangsu 215300, China	86-512-5726-1515	Fax : 86-512-5726-1518
GCC Europe B.V.	Eglantierbaan 43-45, 2908 LV, Capelle a/d IJssel, The Netherlands	31-10-458-9367	
GCC America, Inc	20453 E Valley Blvd. Walnut, CA 91789, USA	1-909-718-0248	Fax : 1-909-718-0251
		US & Canada Only	Toll Free: 1-888-284-5211