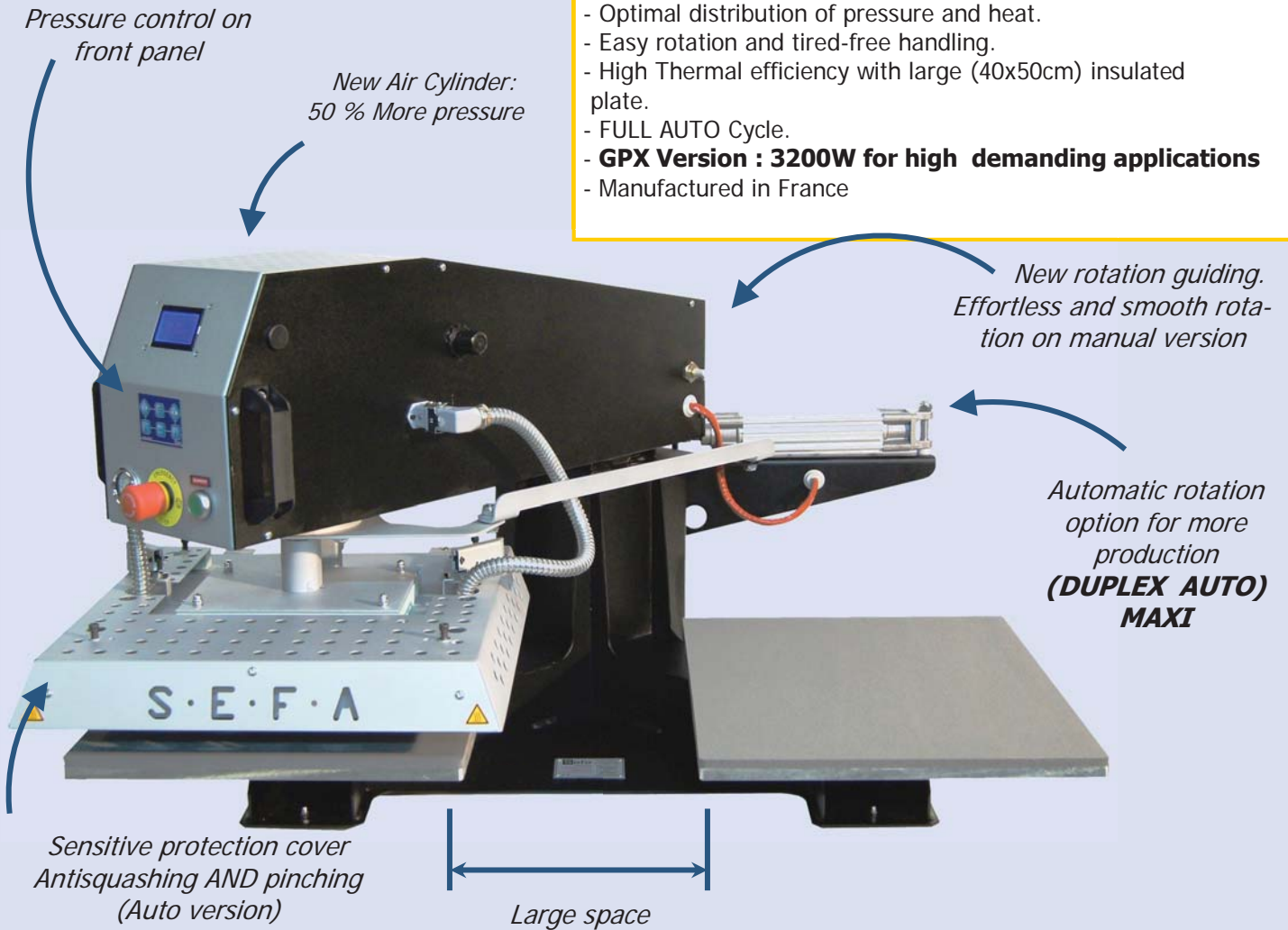


DUPLEX AUTO / MAXI / GPX

- **1 years Guarantee** on the machine, high productivity.
- **10 years Guarantee** on heating element.
- Large space between, behind and under the plates, **ideal ergonomics for larger items**.
- Very high pressure. Valid for all kind of transfers, including laser transfers.
- Preparation in masked time
- No displacement of the transfer
- Optimal distribution of pressure and heat.
- Easy rotation and tired-free handling.
- High Thermal efficiency with large (40x50cm) insulated plate.
- FULL AUTO Cycle.
- **GPX Version : 3200W for high demanding applications**
- Manufactured in France



Accessories



Table

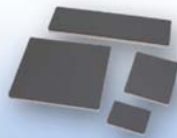


Plate set



Laser



Cover

Technical characteristics

Plate sizes	DUPLEX MAXI & DUPLEX AUTO MAXI : 400 x 500 mm
Weight	137 kg
Pressure	355 gr/cm ² / 6 bars 470 gr/cm ² / 8 bars 580 gr/cm ² / 10 bars
Max Température	220°C
Power supply	230 V <i>Single phase + ground</i>
Electrical power	2500 W (3200W for GPX)
Amperage	11 A (15 A for GPX)

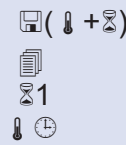
Temperature regulator



Electronic developed by Sefa.

Very accurate and fast regulation (PID control) for a wide range of heat transfer products : Flex, flock, sublimation, screen printing, laser...

Advanced settings :



- 5 pre recorded programs
- Reset counter
- Double timer
- Energy saving

On DUPLEX AUTO MAXI 3 modes availables :

1 plate, 2 plates using semi-automatic mode and 2 plates using complete automatic mode.

From 0 to 30min (precision +/- 1%).

From 0 to 220°C (precision +/- 1%).

Quick start :

Temperature rising time from 0 to 180°C : 15mn.



Complete setup and diagnostics through a PC remote application.

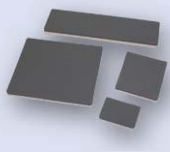
Accessories



Table TAB-PRO2-EXT :

Strong support table, perfect for Sefa presses.

With retractable extensions on each sides.



Set of plate PLA-MULTI :

1 set of 4 plates,
Useful for precise work.
120x80 mm - 150x150 mm
120x450 mm - 250x300 mm



Double Laser CROI-157 :

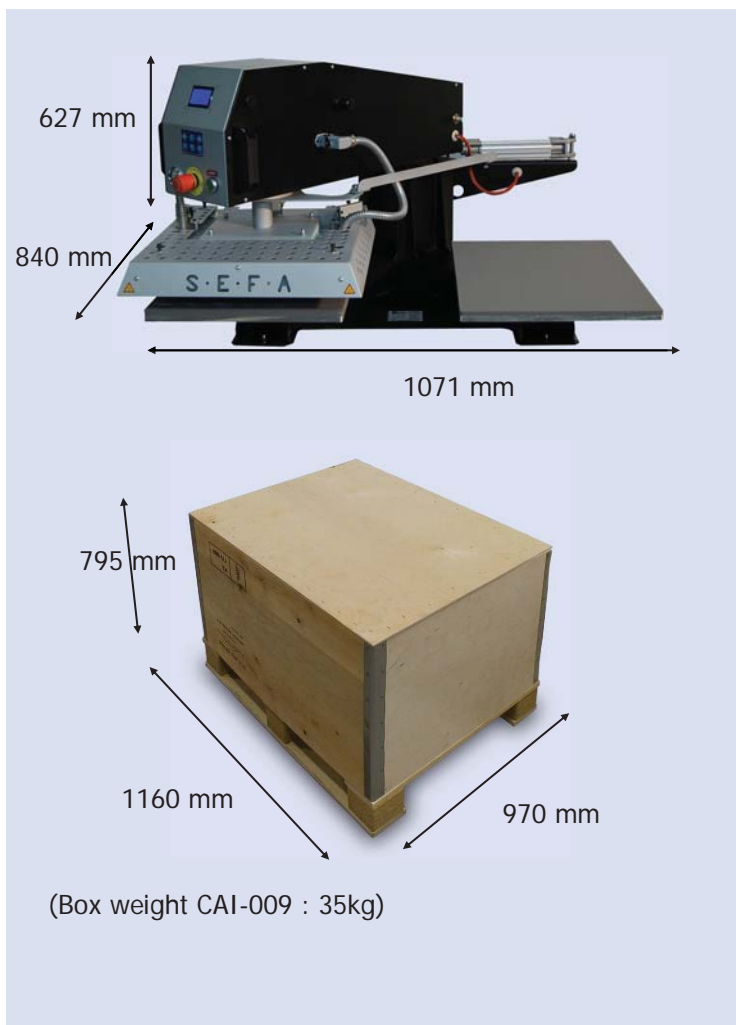
Place your transfers with higher accuracy.



Cover HOU-50 :

High temperature resistant NOMEX®
Softer and gliding surface to easily put your textile on the plate and protecting the foam as well.

Dimensions



(Box weight CAI-009 : 35kg)