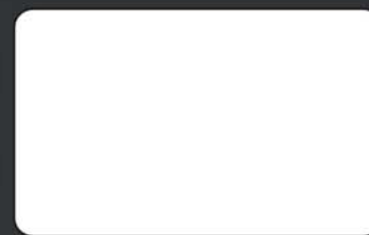


Specification		S400
Work Area		40 x 24 in. (1016 x 610 mm)
Max. Part Size (W x L x H)	All doors closed	41.4 x 25.4 x 11 in. (1053 x 647 x 280 mm)
	All door open	41.4 x ∞ x 11 in. (1053 x ∞ x 280 mm)
Table Size		Standard Grid Cutting Table 40.1 x 24.1 in. (1019 x 613 mm)
Dimensions (W x L x H)		56.7 x 34.5 x 41.3 in. (1440 x 900 x 1048 mm)
Weight	CO <sub>2</sub> 30W~40W	260 kg / 573 lb
	CO <sub>2</sub> 60~100W	270 kg / 595 lb
	Fiber 20W~60W	260 kg / 573 lb
Laser Source		10.6-μm CO <sub>2</sub> laser: 30 to 100W 9.3-μm CO <sub>2</sub> laser: 60W, Fiber Laser: 20 to 60W
Cooling		Air-cooled, Operating environment temperature 15°- 30°C (59°- 86°F)
Drive		Closed-loop DC servo control
Maximum Motor Speed		140 IPS
Speed Control		Adjustable from 0.1~100% (Up to 16 color-linked speed settings per job)
Power Control		Adjustable from 0~100% (Up to 16 color-linked power settings per job)
Engraving Capability		256-level gray scale image processing capability
Distance Accuracy		0.254 mm or 0.1% of move, whichever is greater
Z-Axis Movement		Automatic
Focus Lens		CO <sub>2</sub> : Standard 2.0" (Optional 1.5", 2.5" & 4.0") Fiber: Standard 2.0" (Optional 4.0") Dual (CO <sub>2</sub> +Fiber): Standard 2.0" (Optional 3.0" & 4.0")
Resolution (DPI)		Available 125, 250, 300, 380, 500, 600, 760, 1000, 1500
Computer Interface		10 Base-T Ethernet USB-A for USB storage USB-B 2.0 for connection
Compatible Operating System		MS Windows 64 Bit
Control Panel		Touch Screen
Safety		Class I Laser Product Complies with EN60825-1:2014, EN ISO 13849-1:2015 Class II Laser Product Complies with CDRH for CO <sub>2</sub> Laser Class 3R Laser Product Compliant with CDRH for Fiber & Dual Laser sources 2006/42/EC Machinery Directive Compliance Class 4 Laser Product Compliant with CDRH with the optional pass-through door module
Operating Voltage		Below 80Watt, 100-240VAC, 50/60HZ Auto Switching, max. 15A 80Watt and above, 200-240VAC, 50/60HZ Auto Switching, max. 15A
Fume Extraction System		External exhaust system with minimum flow rate 800m <sup>3</sup> /h (CFM 471 ft <sup>3</sup> /h) is required, 2.3kPa negative pressure (Pure-Air PA-1500FS @ 4" exhaust port)

\*\* Speed is not equal to throughput. See dealer or visit [www.gccworld.com](http://www.gccworld.com) for more detail.

▲ Specifications are subject to change without prior notice.

Authorized Dealer



[www.GCCworld.com](http://www.GCCworld.com)

# The Flagship Model of The Laser Engraver

Your Best Ever, Beyond Expectation,  
Unlimited Laser Machine.



Laser Engraver  
**S400**

- 40" x 24" (1016 mm x 610 mm) extra large working area
- CO<sub>2</sub> and Fiber Hybrid laser option in one laser machine
- High speed 140ips DC servo motor for precise and rapid movement of the laser carriage
- GCC dust protection technology and SmartLID™ make maintenance a lot easier
- QSM (Quality Speed Mode) maintains 100% engraving quality while operating at maximum speed
- Patented SmartACT™ motion control technology increases your productivity by reducing ramping process and job running time
- Drag and engrave feature assures remarkably easy and fast set-ups
- LED light modules illuminate the working area
- Pass-through front and rear doors to accommodate long working pieces (Optional)



# GCC LaserPro S400



## Laser Engraver GCC LaserPro S400

Inherit all the advantages from Spirit Hybrid, a brand new machine – S400 features 140ips processing speed by DC servo motor, innovative touch panel, user friendly interface and a modern good looking design. Together with SmartLID™ easy access, dust protection, S400 presents you the highest throughput and precise laser quality. GCC S400 makes all your imaginations to life at the speed of light.

### Features



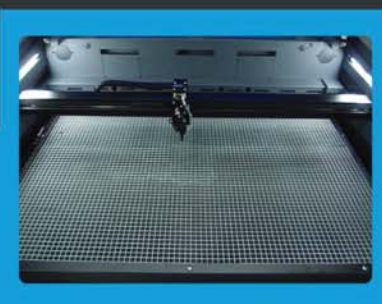
#### SmartLID™ Easy Access

Easy access design simplifies the maintenance job.



#### SmartACT™ (Patented)

Ground-breaking technology that reduces the ramping process and the job running time, which translates into higher productivity.



#### SmartLIGHT

Built-in LED light module illuminates the working space and makes every engraving detail easy to see.



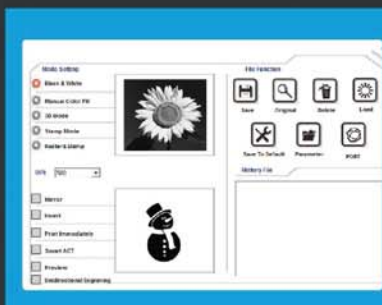
#### Pass-through Front & Rear Doors (Optional)

Convenient front and rear door open design enables loading of extremely long working pieces with ease and extends business flexibility.



#### New Airflow Design

All new airflow design provides the best vacuum effect.



#### User Friendly Driver Interface

Starting from end users' view, GCC driver evolves into a brand new design with the intuitive interface to favor each user.



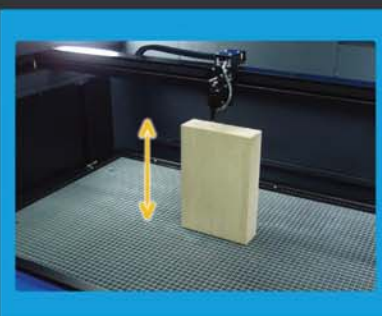
#### Perfect Cutting and Engraving Throughput

Maximum 140ips processing speed with powerful DC servo motor to boost productivity while maintaining precision.



#### Dust Protection

Reduce the dust into the machine and gantry during processing with protection design.



#### Higher Working Depth

Depth of Z-axis up to 11" (280 mm).



#### Intuitive Touch Screen

Operation is easy and intuitive with the 4" touchscreen.

## GCC LaserPro S400 Application

