

GRAPHTEC

Auto Sheet Feeder Unit **F-MARK2** for CE7000

Suitable option for post process
with print on demand.
Improves productivity to produce stickers/labels
and more with sheet media,
and contribute to the reducing labor cost.



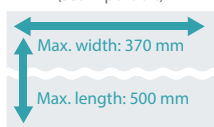
Features

- Continuous, hands-free sheet media loading and processing
- Dedicated software ensure accurate alignment of contours and printed images
- Camera quickly detects 2-point reference marks for alignment
- Performs half cutting, perforation cutting as die cutting and dashed line cutting

Maximum media size

Super A3

(set in portrait)



Media stacking up to

35 mm or **200 sheets**

(it varies by material, thickness and condition of media)



* The cutting plotter is not included in the system. The F-MARK2 is a product of ATS Digital S.r.l.

Applications

It is suitable for post-processing of the printed media created with the print-on-demand in small production runs for producing various products such as labels, heat transfer sheets for custom apparel and the POP as table advertising.



Label



Custom Apparel
(Heat transfer)



POP
as advertisement



Components of the system



Camera

Quickly detects 2-point reference marks for aligning the contour & printed images.

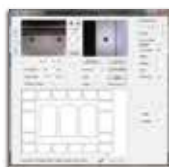
Auto Sheet Feeder Unit

An arm with air suction cups lifts the media from the supply tray and places it into the cutter.

Exit tray

After cutting is completed, sheets are ejected in the tray.
* It is required to periodically remove sheets from the tray.

Digital Cutting Software (Windows)



The system includes dedicated application software. After media is loaded, the attached camera quickly detects 2-point reference marks and corrects alignment before contour cutting data is transferred, giving you the perfect cut every time.

The software configures cutting conditions such as number of copies, cutting force, cutting speed, offset, and number of paths, and it can import Adobe Illustrator or CorelDRAW EPS files as the contour data.

* Designs created with any version of Illustrator or CorelDRAW need to be saved or exported in the specified format.

Cutter unit

Graphtec CE7000-40

Specifications

Item	Part No.		
Auto Sheet Feeder Unit	F-MARK2		
specifications			
Unit	Item	Description	
Whole system (Auto sheet feeder unit with cutter unit)	Supported standard sized media	A4 (297 x 210 mm), SRA4 (320 x 235 mm) (It is loaded with landscape orientation.)	
		A3 (297 x 420 mm), A3+ (typical 329 x 483 mm), SRA3 (320 x 450 mm) (Loading is in portrait orientation.)	
	Interface to PC	Single port of USB (The USB hub to connect the auto feeder unit and cutter unit is included.)	
	Power source	100 to 240 V AC (It is required three power outlet.)	
	Operating environment	Temperature: 10 to 35 °C, Humidity: 35 to 75 % RH (non-condensing)	
	Dimensions	When the entire system is placed on the table - Size of the upper part from the table: Approx. 672 (W) x 820 (D) x 266 (H) mm - Size of the lower part from the table: Approx. 672 (W) x 380 (D) x 420 (H) mm * The CE7000-40 is placed to edge of table. Refer the illustration of Dimensions.	
Weight	Approx. 25 kg (Cutter unit (*1) : 11 kg, Auto feeder unit: 10 kg, Exit tray: 4kg)		
Auto sheet feeder unit (F-Mark2)	Supported media	Width: 279 to 370 mm, Length: 210 to 500 mm (up to 700 mm when the option EXTENDER is installed.)	
		Up to 350 g/m ² (It is the grammage of the media that can be handled by the automatic feeder unit.)	
	Capacity of Exit tray	Up to 200 sheets or up to 35mm height (It varies by the material, thickness and condition of media.)	
	Interface	USB2.0	
	Power source	AC adapter, 100 to 240 V AC, Approx. 60 VA at output power	
Compatible Standards	Main body : cNus(UL / cUL), CE mark, FCC AC adapter : UL, cUL, CE mark, FCC, PSE, CCC		
	Digital Cutting Software	Supported OS	Windows 10, 8.1, 7
Cutter unit (CE7000-40) (*1)	Contour cutting data format	ai (Illustrator version 8) and Corel DRAW eps (The contour cutting data file contains only the contour cutting objects and reference marks and is saved in the specified format.)	
		Cutting speed	Max. 600 mm/s all directions
	Acceleration	Max. 21.2 m/s ² (2.2 G) at 45° direction	
	Cutting force	Max. 4.41 N (450 gf) with CE7000-40	
	Interface	USB 2.0(Full Speed), Ethernet 10BASE-T/100BASE-TX	
	Power source	100 to 240 V AC	
	Power consumption	Up to 100W	
Compatible Standards	UL, cUL, CE mark, RoHS Directive		

* F-MARK2 works only with the dedicated software.

Function of the CE7000-40 will be limited when the dedicated software is used.

*1 The cutting plotter CE7000-40 is not included in the system. The F-MARK2 is a product of ATS Digital S.r.l.

- Brand names and product names listed in this brochure are the trademarks or registered trademarks of their respective owners.
- Items mentioned are subject to change without notice. For more information about product, please check the web site or contact your local representative.



Important safety instructions

- Before using it, please read the user manual and then please use it properly in accordance with the description.
- To avoid malfunction or electric shock, please ensure ground connection and use it in specified power source.

Standard accessories

Item	Q'ty	Item	Q'ty
Auto sheet feeder unit F-MARK2	1	Exit tray	1
Stopper	1	Self adhesive cable clip	2
Suction cups (for replacement)	2	Camera set	1
Allen wrench (2mm)	1	Calibration sheet	2
Alignment label	2	USB Hub	1
AC power adapter	1	USB cable (1m)	1
User manual and software(CD)	1	Test sheet	12
Safety quick guide	1	Tail Tool	1

Options

Item	Part No.	Description
Extended bracket of rear media guide (EXTENDER)	U797000028	Bracket to support long media up to 700 mm

Supplies

Item	Part No.	Description	Package
Cutting blade holder	PHP33-CB09N-HS	For CB09U series blade	1 set/pack
	PHP33-CB15N-HS	For CB15U series blade	1 set/pack
Cutting blade	CB09-P	0.9mm dia. 45° angle, Super steel	5 blades/pack
	CB09UB-5	0.9mm dia. 45° angle, Super steel	5 blades/pack
	CB15U-5	1.5mm dia. 45° angle, for paper/cardboard	5 blades/pack
Loupe	PM-CT-001	Checking blade length, for PHP33 and PHP35 series	1 set/pack
Cutting Mat	PM-CR-009	Cutting Mat for CE7000-40	2 sheets/pack

Dimensions

(Scale : mm, Tolerance : +/- 5 mm)

