

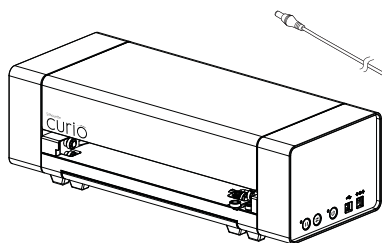
Getting started with your Silhouette **curio**



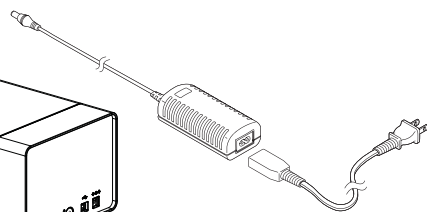
# Connecting your Silhouette Curio™

## 1 Check Included Items

The Silhouette Curio™ comes with the items shown in the following list. Check that all the items have been included before starting. If you are missing any items listed below, please contact [support@silhouetteamerica.com](mailto:support@silhouetteamerica.com).



Silhouette Curio™  
electronic cutting tool



A/C adapter and  
power cable



blade with  
ratchet cap



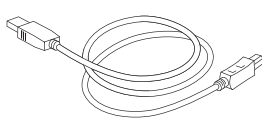
embossing tip  
(fine & wide)



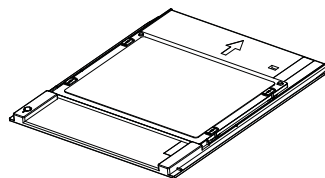
print & emboss  
squares (x3)



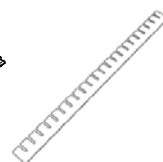
Silhouette Studio®  
software



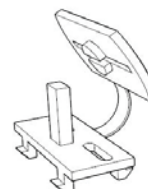
USB cable



8.5" x 6" base with 3  
platforms, 1 embossing  
mat, & 1 cutting mat

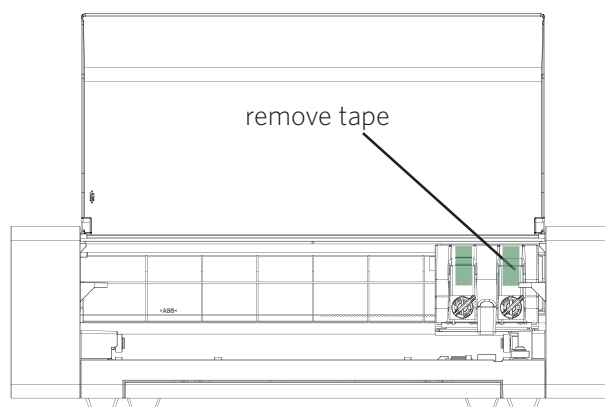
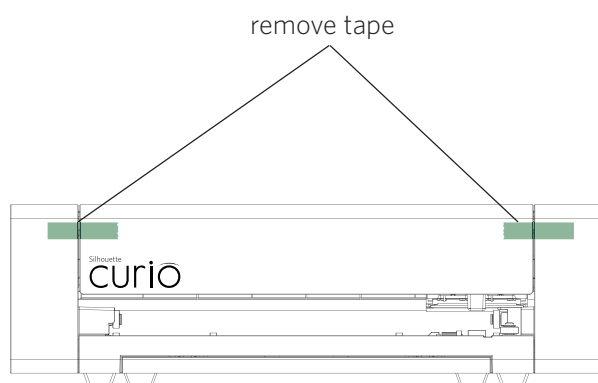


material  
fasteners (x4)



replacement  
snaps (x4)

Take the Silhouette Curio™ from the box and remove the strips of packing tape as indicated by the following diagrams. These strips of tape are used to hold the moving parts of the Silhouette in place during shipment.



## 2

## Install the Silhouette Studio® Software

### PC Installation

1. Insert the included Silhouette Studio® CD into the CD drive of your computer.
2. Proceed through the installation process by following the on-screen prompts. If the installation window does not automatically appear, browse to the CD drive in My Computer and double-click the setup.exe program to run it.
3. If a “New Hardware Found” dialog box appears, follow the recommended instructions to accept your system’s installation of the Silhouette driver.

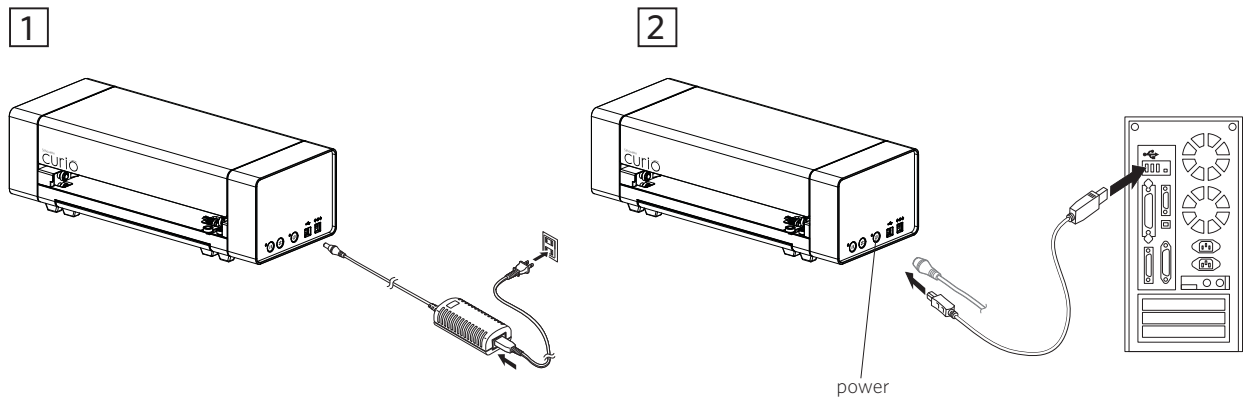
### Mac® Installation

1. Insert the included Silhouette Studio® CD into the CD drive of your computer.
2. Drag and drop the Silhouette Studio® application icon into the applications folder to install Silhouette Studio®.

## 3

## Connect the Silhouette Curio™

Once the Silhouette Studio® software is installed, connect the Silhouette Curio™ to the power supply. Then connect the Silhouette to your computer with the included USB cable as shown in the diagram.



Turn the machine on by pressing the power button. If your PC displays a “New Hardware Found” dialog box, follow the recommended instructions to accept your system’s installation of the Silhouette driver.

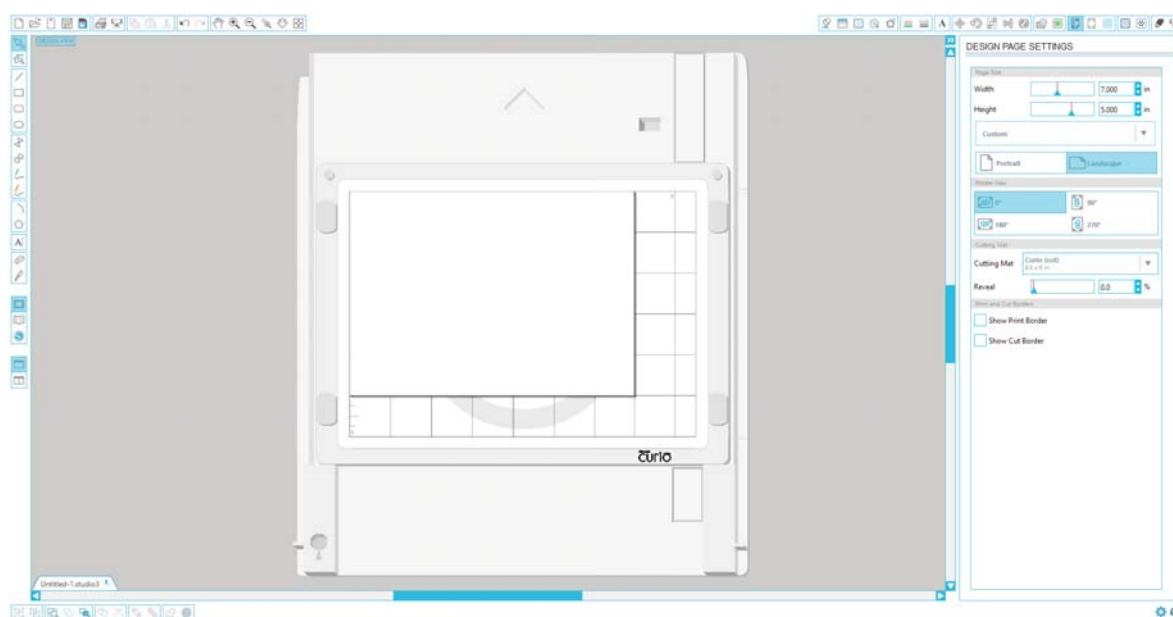
# How to Cut with Your Silhouette Curio™

## Opening the Silhouette Studio® Software



Locate the Silhouette Studio® icon on the desktop, or in the Start Menu on your PC (in the Applications folder on a Mac®). Double-click the icon to run the application.

Once Silhouette Studio® has loaded, you will notice a blank 8.5" x 6" page on your screen.



If you would like to change the page dimensions or orientation, you will find the page setup options already opened in a panel on the right-hand side of the screen.

To access these page setup options in the future, click the Page Settings button in the options toolbar in the upper right-hand corner of the window.

**NOTE:** To change the measurement units from the U.S. system to the metric system, choose Edit -> Preferences... (Silhouette Studio® -> Preferences... on a Mac®). Under the Measurements section of the preferences dialog box you will find several different units of measure.



# Drawing Text

**A** To cut letters or words using any font on your computer, choose the text tool from the toolbar on the left-hand side of the screen. With the text tool selected, click anywhere on the page to begin typing.



After clicking on the page with the text tool, a blinking cursor will appear. Begin typing any letters/words/phrases you choose.

While you are typing/editing text, the text options panel will appear on the right-hand side of the screen. In this panel you can change the font, text size, weight, justification, character spacing and line spacing. Use the mouse to highlight your text before making adjustments to the font, size, weight, etc.

To finish typing your text, click anywhere off the page. This will end the text editing mode and deselect the text. If you need to make a change to the text, double-click the text on the page using the Select Tool (found on the left-hand toolbar).

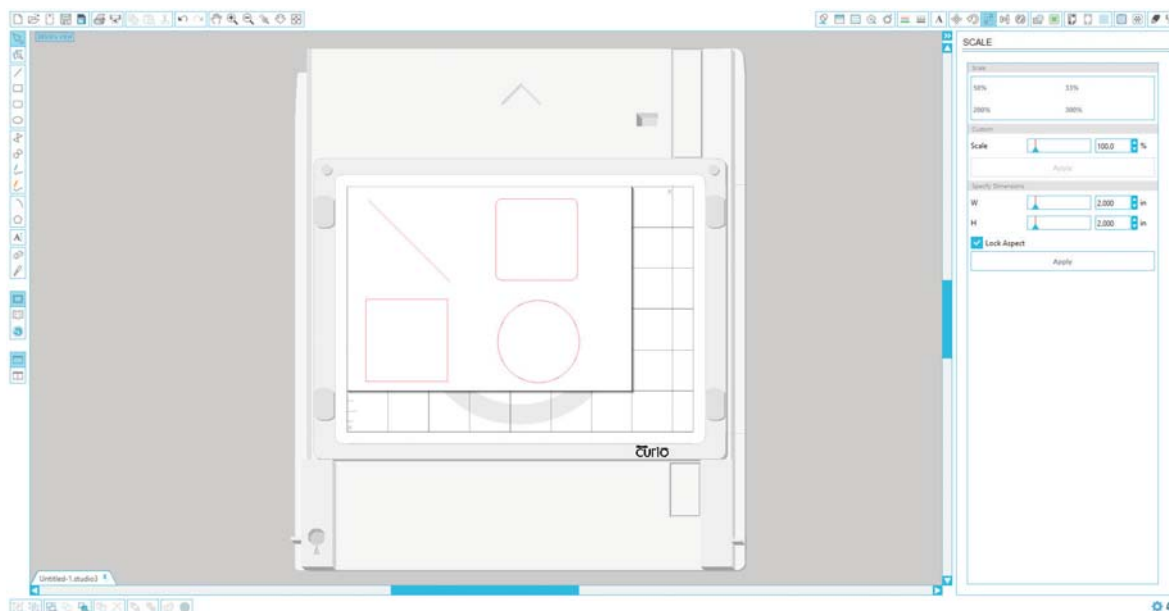
**To move your text** around the page, click and drag it to a new location.

**To resize your text**, select the text and then click and drag one of the corner control handles.

**To rotate your text**, select the text, then click and drag the green circle displayed above the object.

# Drawing Simple Shapes

Silhouette Studio® has built-in functions to draw simple shapes such as circles, squares, rectangles, lines, polygons, and freehand line art. Each of these tools can be found in the toolbar on the left-hand side of the Silhouette Studio® window.



## Lines



To draw a line, choose the Line Tool on the left-hand toolbar. Either click and drag with the mouse to draw a line, or click once to start the line and click a second time to end.

Hold SHIFT while creating a line to make a perfectly vertical, horizontal, or 45° line.

## Rectangles/Squares



To draw a rectangle, choose the Rectangle Tool from the left-hand toolbar. Either click and drag with the mouse to draw a rectangle, or click once to set one corner and click a second time to set the opposite corner.

Hold SHIFT while creating a rectangle to make a perfect square.

Hold ALT (OPTION on Mac®) to draw the rectangle from the center instead of one corner.

Hold SHIFT + ALT (SHIFT + OPTION on Mac®) to draw a perfect square centered on your original click.

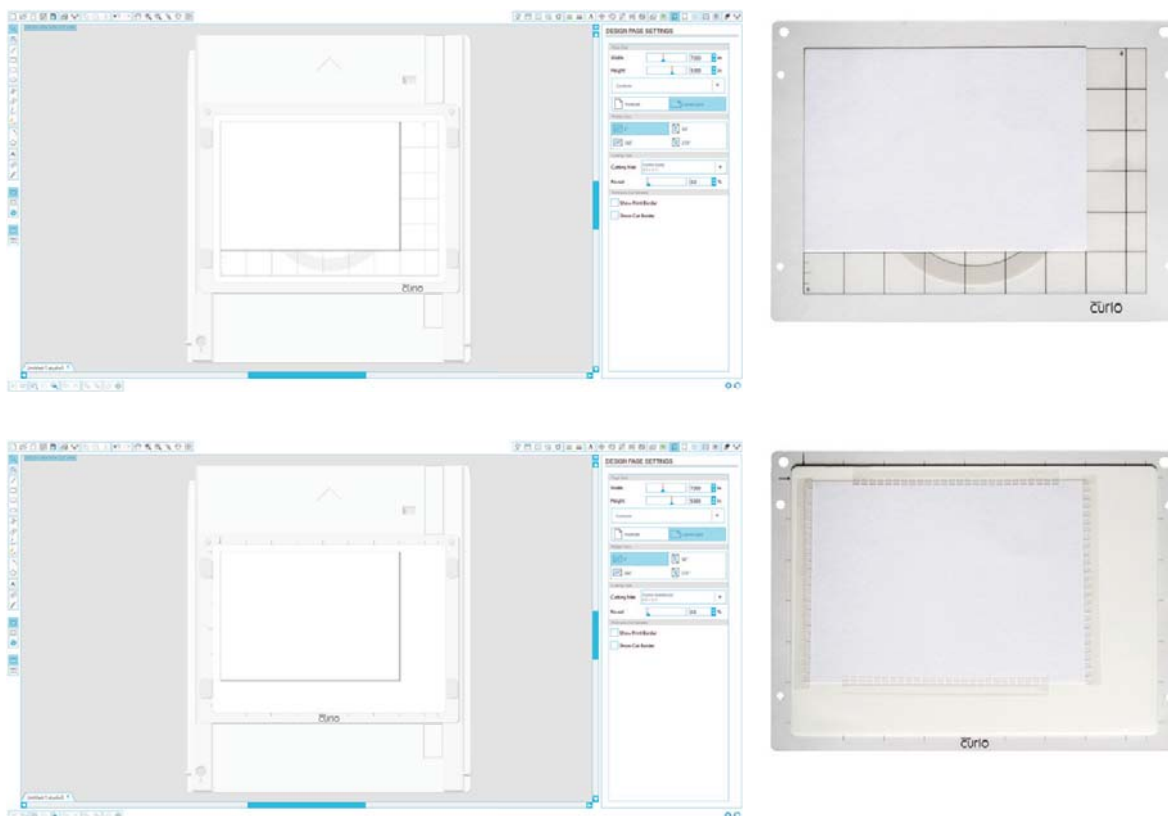
# Loading Your Material

## Preparing Your Mat

Choose your mat based on the type of project you want to make. If you are only cutting, use the cutting mat. If your project needs to be embossed, use the embossing mat. You can cut on the embossing mat as well, but it will last longer if you limit the number of cuts performed on the mat.

Remove the protective liner from the cutting mat or embossing mat.

Position your paper or other media on the mat according to the diagram shown in Silhouette Studio®.



**Tip:** To keep your material secure when embossing, place the material fasteners around the edge of your material as needed.



If you don't see an image of the mat under your document on the screen, click the Page Setup button in the options toolbar in the upper right-hand corner of the window.

Position your image on the screen where you want it to cut or emboss on the mat. **Be sure to keep your design within the red margins on your page.**

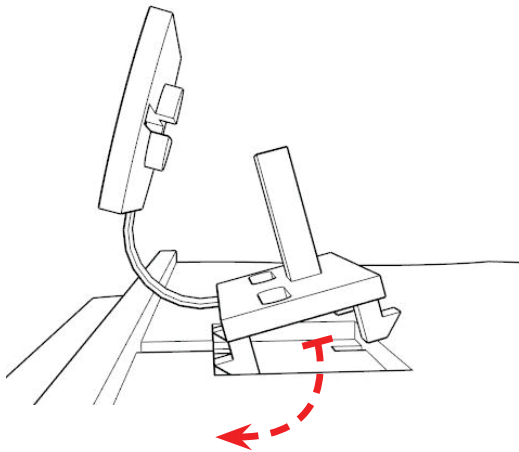


## Selecting the Platforms and Preparing the Base

The Curio can accommodate a wide range of materials by adding or removing platforms. The Curio comes with 3 platforms (marked with either a '1' or a '2'). For common material types, the Silhouette Studio® cut settings will indicate which combination of platforms you should use (for example, a platform setting of '3' would require both a #1 platform and a #2 platform since 1+2=3).

Once you have determined the appropriate combination of platforms, place them onto the base over the snap posts. Place your mat on top of the platforms and secure everything together with the snaps.

tool storage slots



**Replacing Snaps:** If a snap needs to be replaced, it can be exchanged with one of the replacement snaps provided with your Curio.

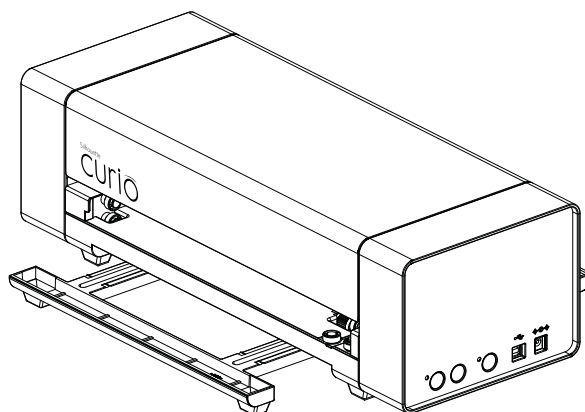
To do so, simply remove the old snap by pinching the feet together on the underside of the base and pulling the snap out. Next, insert the new snap (with the feet closest to the outside edge of the base being inserted first). Finally, rock the snap into place so that the two inner feet lock into the base.

## Inserting the Base into the Curio

Before inserting the base into the Curio, it is important to ensure there is adequate clearance in front of and behind the Curio for the base to move in and out unimpeded. You can also extend the stabilizing feet for additional stability of heavy or long projects.

To load the base into the Curio:

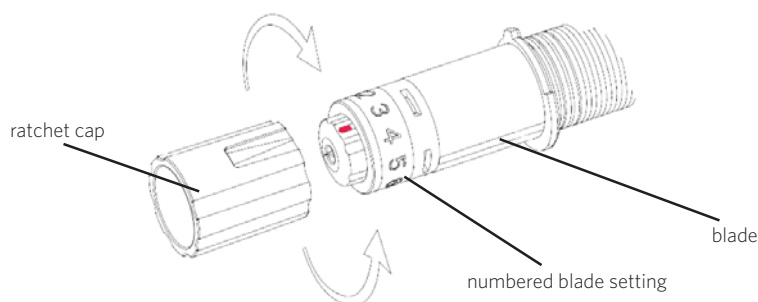
1. Power off the Silhouette Curio
2. Insert the base into the front of the Curio
3. Push the base inward until the leading edge of the base extends out the back of the Curio
4. Power on the Curio



Prepare the blade plunger by removing the protective covering and adjusting the blade to the appropriate number setting for the material you plan to cut. Refer to Silhouette Studio® for recommended blade settings for different materials.

Blade setting	Material
1	Thin materials such as vinyl and smooth heat transfer material
2-3	Medium-weight materials such as paper, cardstock and flocked heat transfer material
4-6	Thicker materials such as textured cardstock and pattern papers
7-10	Thick materials such as canvas

To adjust the blade setting, place the grey ratchet cap on the end of the blade so the arrow on the cap lines up with the red line on the blade. Turn the ratchet to the desired number.

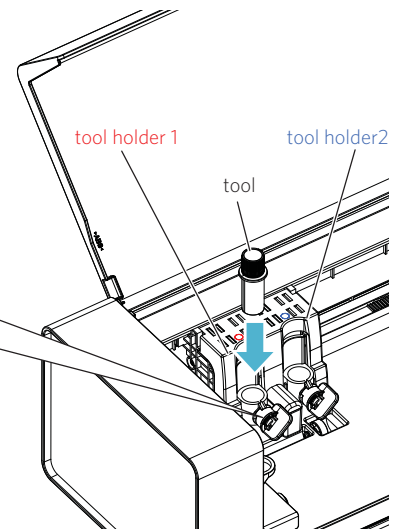
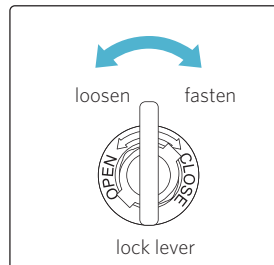


**NOTE:** To remove fibers from blade housing, ratchet blade down to 0 and carefully grasp the white tip turning it counterclockwise to remove the small end cap. Blow fibers away (do not touch blade). Replace and hand-tighten cap.

## Dual-Carriage Setup

The Curio provides a dual-carriage to hold two different tools simultaneously. This allows you to perform a variety of actions during the same job. The two carriages are labeled as red (or Tool 1 on the left side) and blue (or Tool 2 on the right side). Tools can be used interchangeably in either carriage.

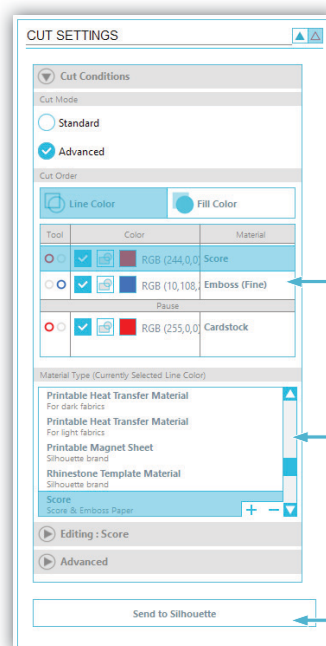
To load a tool into the desired carriage, unlock the tool holder by turning the lock lever counter-clockwise. Place the tool in the tool holder and turn the lock lever clockwise to secure the tool. Be sure the tool is pressed completely into the holder.



## Sending Your Job to the Curio



Click the Cut Settings button on the toolbar at the top of the screen. The Cut Settings panel will appear on the right side of the screen.



Cut Order

Select Media Type

Send to Silhouette

If using multiple tools, you can assign which lines will be performed by each tool. This can be done in one of two ways.

If using the default “Standard” Cut Mode, you can select your image on your workspace and then click on the Tool you want to assign the image to.



If using the “Advanced” Cut Mode, you can assign which tool will be used according to the image’s line color or fill color by clicking on the desired Tool.



You can also adjust the cut order (if applicable) under the Cut Conditions menu.

Within the Cut Settings panel, you will notice a list of common media types including various weights of paper, vinyl, and other materials. Choose the appropriate media type from the list. If the media you are using does not appear in the list, you can choose “Custom” from the list and manually adjust the settings. Generally, thicker materials require a higher thickness and intricate designs require a slower cutting speed.

Once you have chosen the appropriate settings, click the Send to Silhouette button at the bottom of the right panel.



The Curio will begin working. If needed, you can pause the job by pressing the 'Pause' button on the side of the Curio. Press the button again to resume your job. To cancel the job, hold down the pause button until the yellow light shuts off.



Once the Silhouette is done processing the job, press the "Load/Unload" button and pull out the base to remove the material from the mat.

Replace the protective liner onto the cutting mat or embossing mat.

## Additional Curio-related products are available separately, including:

8.5"x12" base and mats.

These larger mats and base allow you to double your work area for larger projects.

etching tool

This tool is perfect for etching designs into metal sheets.

stippling tool

Stippling is the process of creating a design from a series of dots rather than lines. Use the stippling tool to stipple designs into thin metal sheets or paper.

felt-tip pens

Felt tip pens enable you to draw with your Curio. You can also use the pens to stipple designs.

deep-cut blade

The Curio can accommodate thicker materials and the deep-cut blade is designed to cut certain materials up to 2mm.

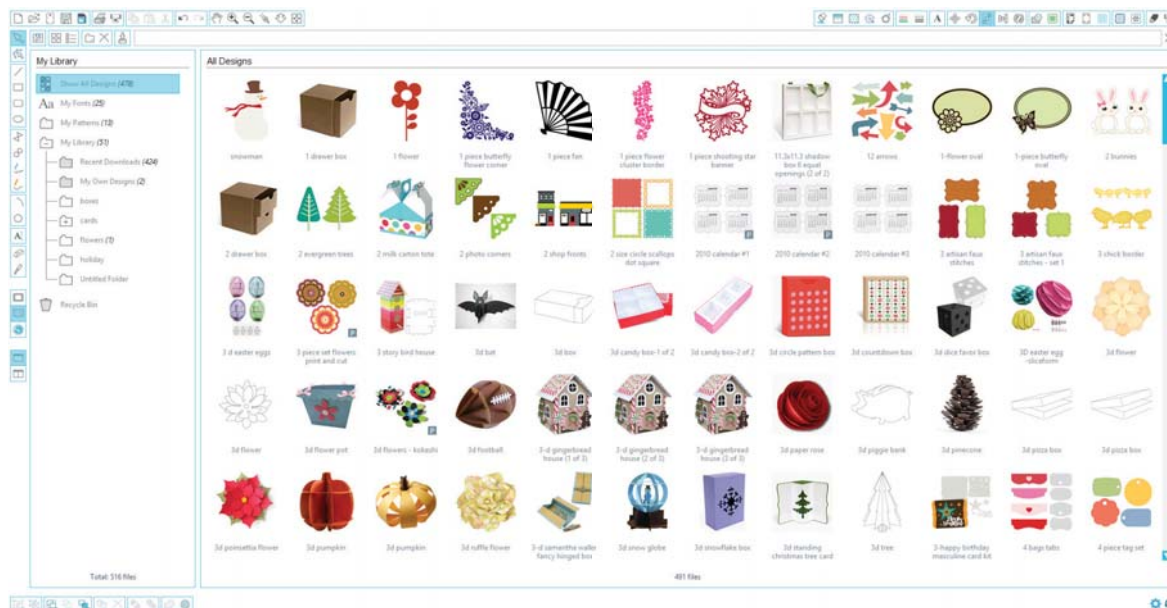
# My Library

## Browsing Designs



Click the My Library button to view the Silhouette designs you have on your computer. Silhouette Studio® includes 50 free designs to help you get started. Connect your Curio to your computer and power it on to get your 50 free designs.

Click the Show All Designs shortcut in the left panel of My Library to view all 50 designs included with your software.



Click the icon next to the My Library folder  to expand the folder and view its contents. This folder initially contains the 50 free designs included.



Use the View as Icons button and View as List button to change the view of your designs in the right panel. In List View, you can sort by name, design type, artist name, and date downloaded.

# Organizing Designs

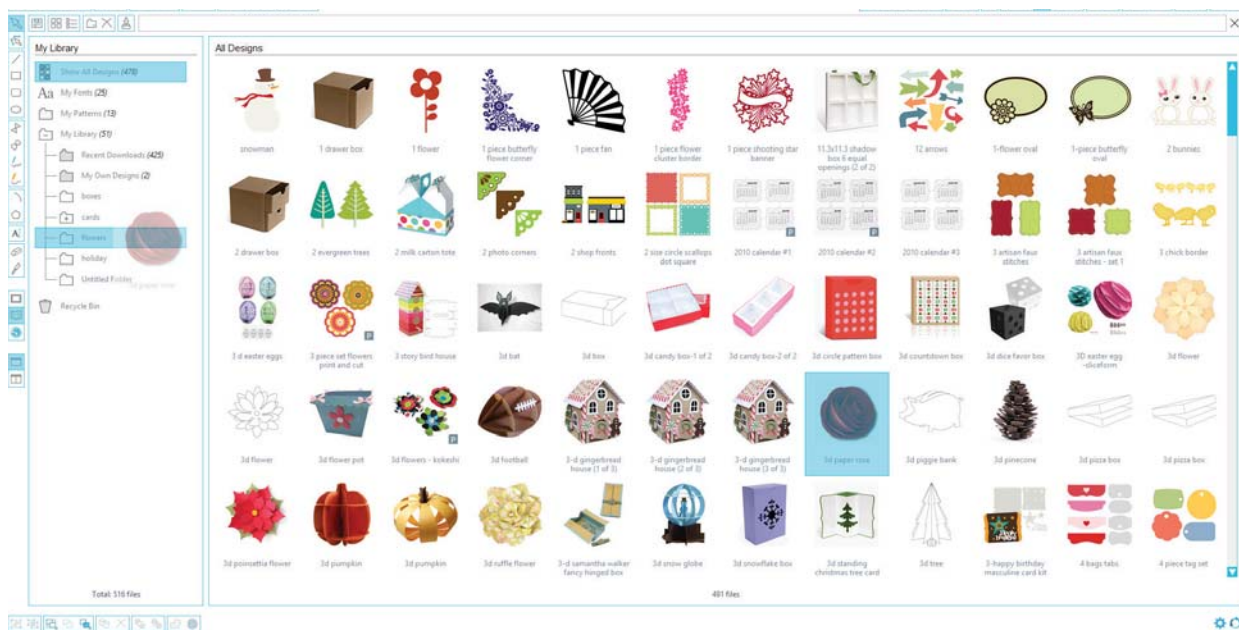
You can organize your designs within My Library for your convenience by creating new folders for your designs.



With the My Library folder highlighted, click the New Folder button in the toolbar at the top of the My Library window, then type a name for your new folder.

Select the My Library folder again to reveal the 50 designs you already have.

Drag any design from the right panel into your newly created folder in the folders panel on the left. The numbers in parentheses next to each folder indicate how many shapes are included in each folder.



## Searching Designs

At the top of the My Library window you will find a search box. Click in the text box and type a keyword to search your library of images. Search results will display in the right panel of My Library.



If you would like to view the keywords and description for a shape used for searching, right click (Control Click on Mac®) and choose Show Properties. At the bottom of My Library details about the highlighted shape will appear. Shapes downloaded from the Silhouette Design Store will contain several keywords and a description or instructions.

## Using Designs in My Library

Using the folders in My Library, navigate to a design that you'd like to cut. Double-click the design to place it on your page in the software.



This will automatically close My Library which can be easily re-opened by clicking the My Library button on the left toolbar again.

To close My Library without pasting a design, click the Close button in the upper right-hand corner of the My Library area.



# Downloading New Shapes

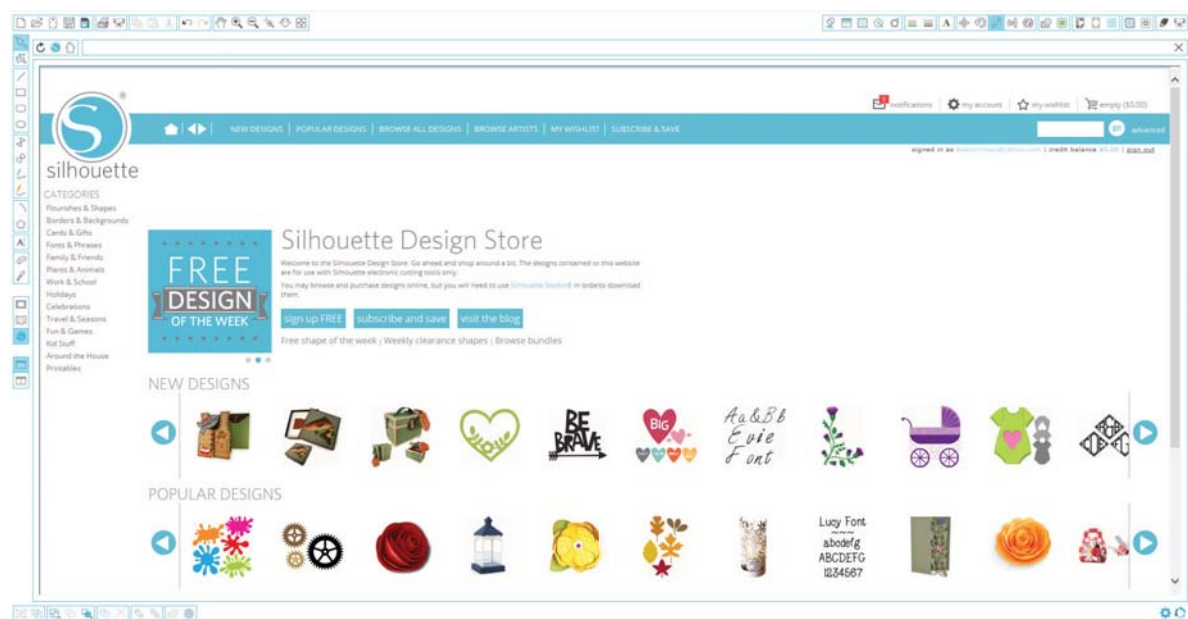
## Connecting to the Silhouette Design Store

The Silhouette Design Store contains thousands of designs to cut with your Silhouette ranging from simple cutouts to intricate patterns and designs. Most shapes are only 99¢. Generally, a free shape is posted every week as well.



To access the Silhouette Design Store, click the Design Store button in the toolbar on the left side of the window.

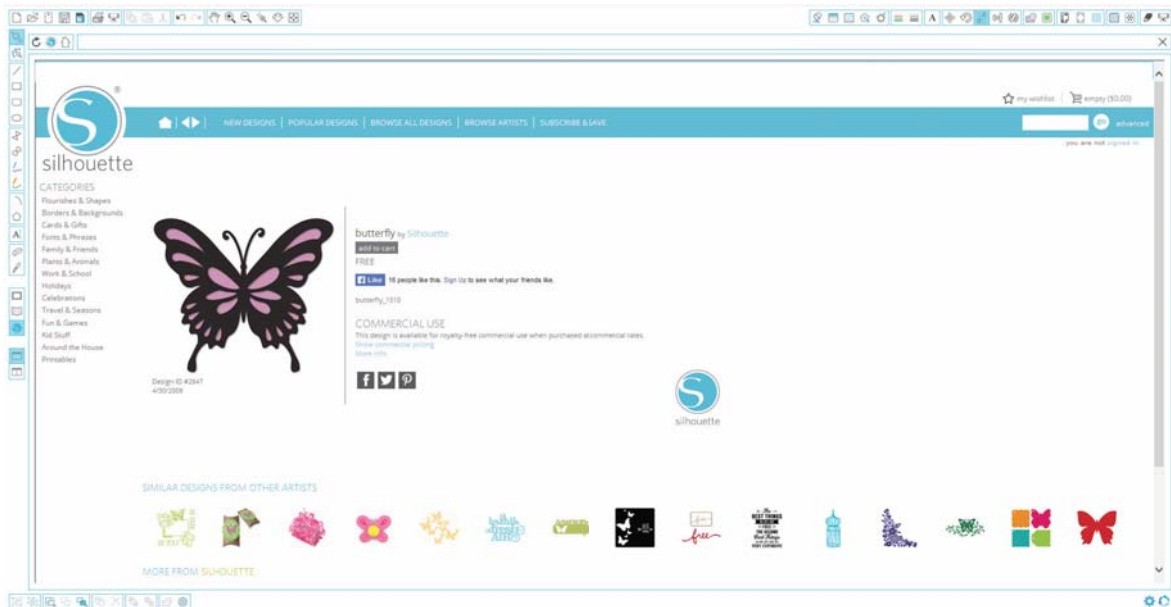
The free design of the week will be displayed on the home page that appears.



## Browsing for new designs

The Silhouette Design Store works like any other web page and can be navigated by clicking on various links to browse new releases, popular designs, etc. The home page contains popular and new designs that you may be interested in.

For now, try downloading a free design by clicking this week's free design button on the home page, or searching for the free design named "butterfly\_1510".



Click on the design in the search results to view details about the design.  
Click the Add to Cart button to add this free design to your shopping cart.

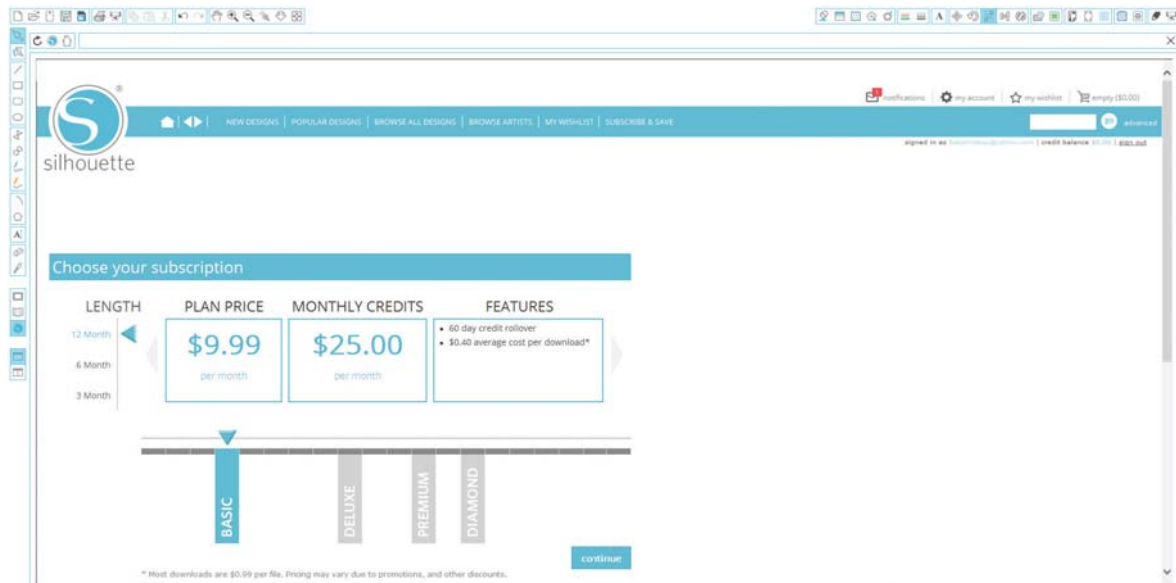


Locate the shopping cart icon in the upper right-hand corner of the window and click it to view your shopping cart. Your shopping cart total should be \$0.00.

Click the Checkout button to proceed. At this time the system will ask you to sign in before downloading. Creating a new account only takes a few seconds. Click the Sign up Free link on the login page to create a new account.

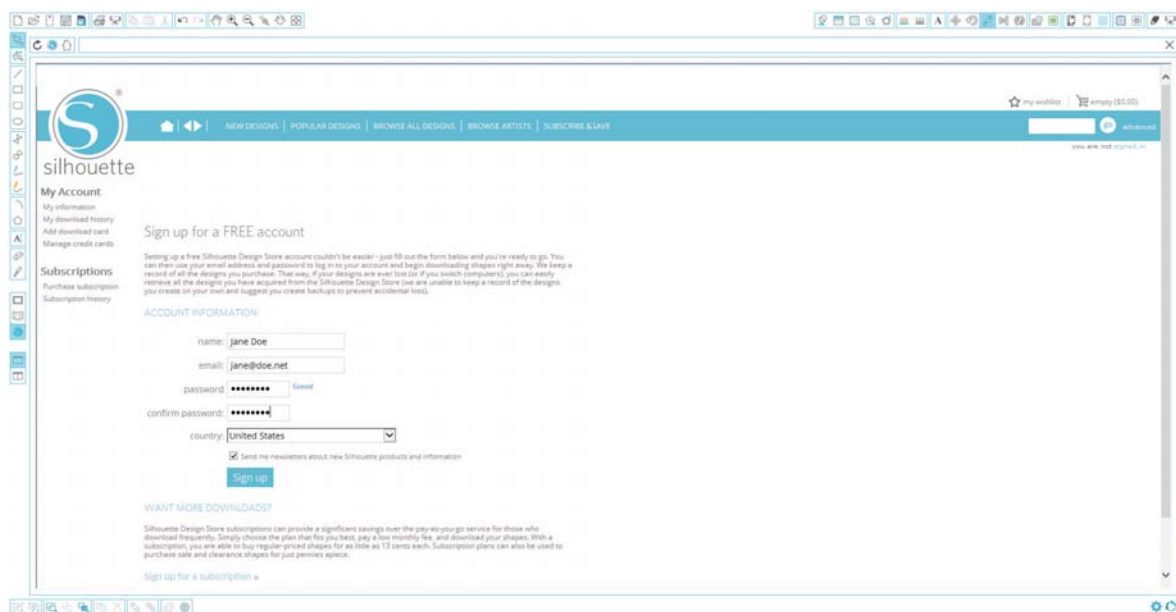
# Creating an account

Several different account types exist. Once you're more familiar with the Silhouette Design Store, you may wish to purchase a subscription and download dozens of designs each month.



In order to create a free account and buy designs one at a time, choose the "Sign up FREE" option.

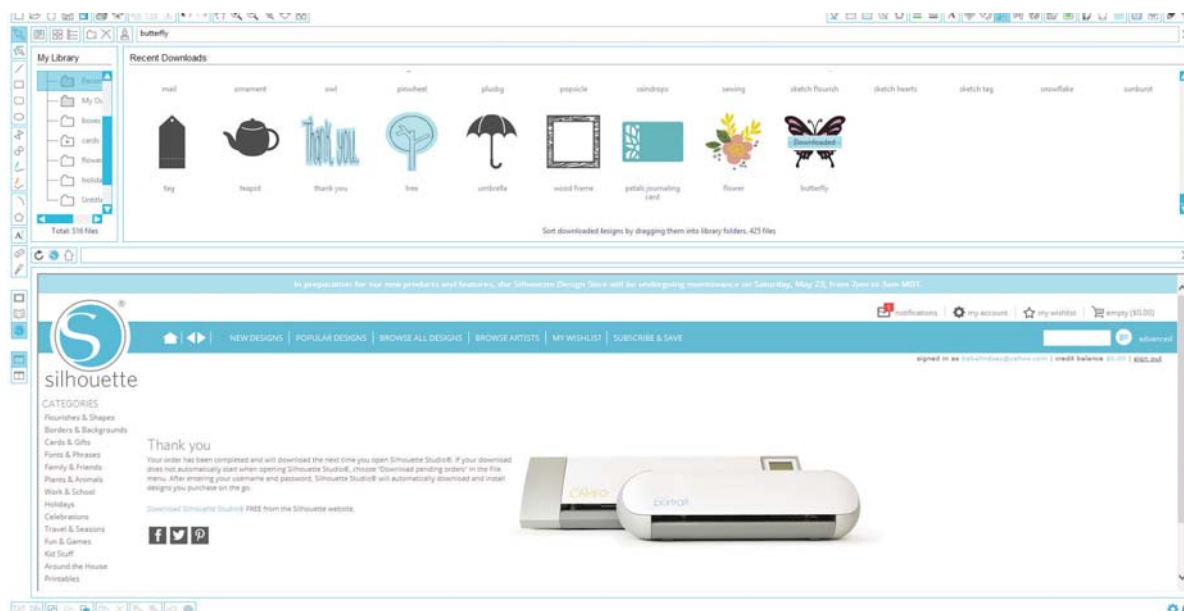
You will be asked for your name, email and password in order to create an account. Type your information and click the Sign Up button.





Once your account is created, you will need to access your shopping cart again and try the checkout process once more. You will be asked to validate your password each time you download designs.

Type your password to authorize the download.

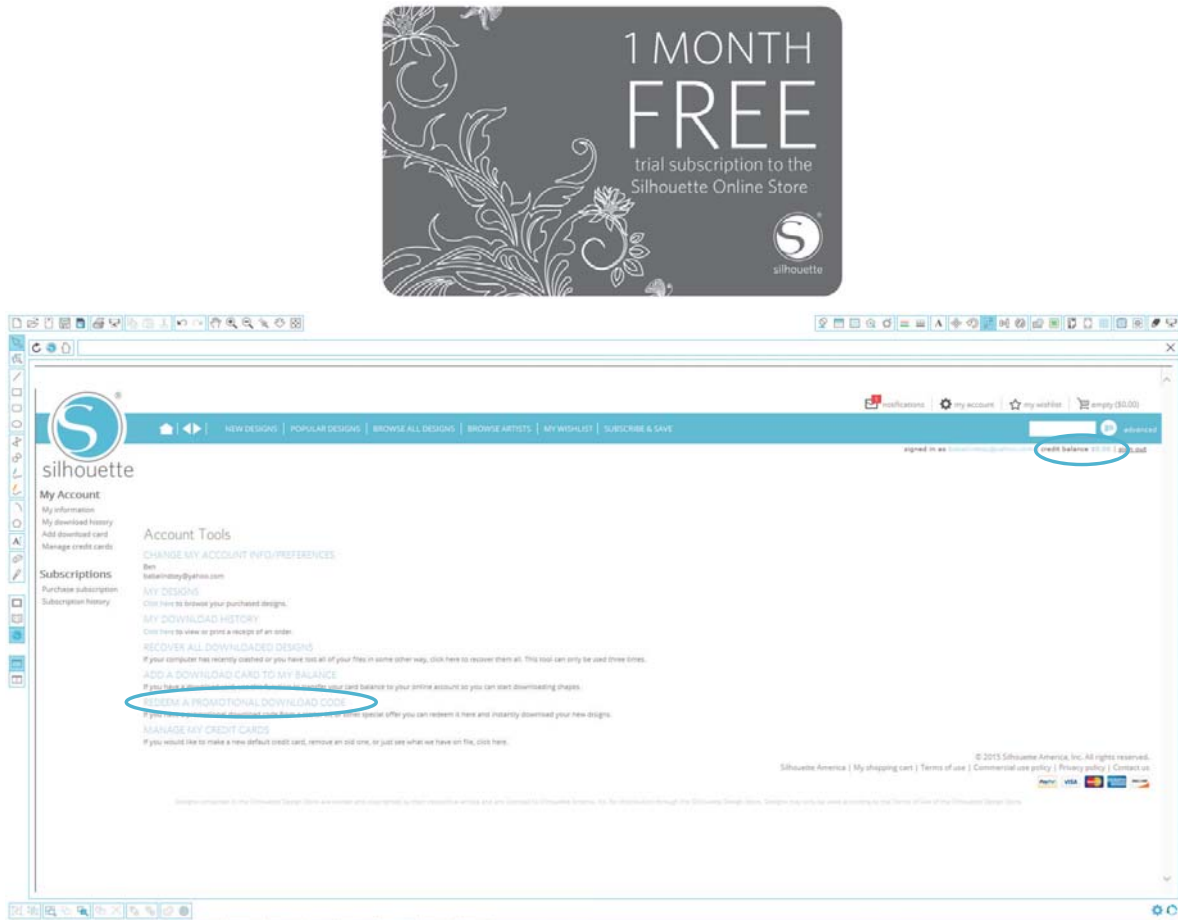


As your design begins to download, it will appear in the Recent Downloads folder of My Library which will appear on the screen showing the download progress. Any new designs you download from the Silhouette Design Store will appear in this special folder and can be moved to any folder of your choice.

Double-click your newly downloaded design to paste it into your current document.

## Using your trial subscription card

If your Silhouette came with a trial subscription card, you may use it to purchase designs from the Silhouette Design Store. To do this, click the 'My Account' link at the top of any page within the Store.



From the My Account page, click the 'REDEEM A PROMOTIONAL DOWNLOAD CODE' link. A screen will appear where you can type the code found on the back of your trial subscription card.

Type your download code and press the 'Apply Card' button.

The trial subscription card entitles you to a Basic Subscription to the Silhouette Design Store for 1 month. Once your trial has been activated, the card is no longer needed and can be discarded.

Your available subscription credits can be viewed in the upper right-hand corner of the screen below the search bar.



## Silhouette Curio™ Safety Precautions

- Keep the Silhouette Curio™ out of reach of children.
- Review and keep this document for future reference.
- The Silhouette Curio™ is an electronic cutting tool and requires careful use and handling. To avoid personal injury or damage to the machine, please read the following safety precautions.


### Conventions used in this guide

In order to use the Silhouette Curio™ safely and correctly, as well as to prevent human injury and property damage, careful attention must be given to each of the safety precautions in this document.


**Failure to comply with these precautions may void the warranty of the product and any personal or property damage liability.**

### Description of safety symbols




The  symbol indicates information that requires careful attention (which includes warnings).



The  symbol indicates an action that is strictly prohibited.



The  symbol, whether next to an image or included in text, indicates an action that must be performed.

### Safety Precautions



#### WARNING



Do not touch moving parts while the Silhouette is cutting.



Keep hands and other objects away from moving parts when the machine is plugged in.



**Do not disassemble, repair, or remodel the Silhouette.**

Tampering with the Silhouette hardware can cause electrical shock or fire due to current leakage. If your Silhouette needs repair, please contact Silhouette Customer Service.



**Do not connect the Silhouette to a non-rated power supply.**

Use of a different supply voltage may result in electrical shock or a fire hazard due to current leakage.



Do not use the Silhouette in a location where it may be exposed to water, humidity, or dust.



**If the Silhouette begins to smoke, gets too hot, emits a strange odor, or otherwise functions abnormally, do not continue using it. Unplug the AC adapter from the electrical socket.**

Use of the Silhouette Curio™ when overheated may result in a fire hazard or electrical shock.

Do not try to repair the Silhouette yourself.



**Do not allow dust or metals near the power plug.**

A dirty power plug may result in electrical shock or a fire hazard due to current leakage.



**Do not use the AC adapter or power cord if it is damaged.**

Use of a damaged power cord or AC adapter may result in electrical shock or fire.  
Replace damaged power cords and AC adapters.



**Only use the AC adapter included in the Silhouette Curio™ box.**

Use of other AC adapters may cause malfunctions or result in electrical shock or fire.  
Be sure to connect the AC adapter to the Curio before plugging it into the wall.



**The Silhouette blade is sharp.**

Handle the blade housing with care and do not touch the blade itself.



**Do not use or store the Silhouette Curio™ in a location exposed to direct sunlight or a direct draft of an air conditioner or heater.**

Excessive heat, dust and/or humidity can cause the machine to malfunction.



**Do not use the Silhouette Curio™ in a location subject to excessive vibration or electrical noise.**



**Do not pull on the power cable to unplug the Silhouette.**



**If a foreign object/substance enters the Silhouette during operation, cancel the current project by turning the machine off.**

Do not attempt to remove the foreign object or continue cutting.



**Do not attempt to lubricate the Silhouette Curio™.**

The Silhouette does not require lubricant or any liquid agent to operate normally.



**Do not use any liquid cleaning agents or any other liquids on the interior of the Silhouette Curio™ or around the Silhouette control panel.**

Liquids will ruin the functionality of the machine.

Be sure to leave enough space around the Silhouette Curio™ during operation so the machine, media, and cutting mat do not touch surrounding objects.

Keep the Silhouette Curio™ at least 3 feet away from any light or heat sources.

Always use the correct blade setting for the material you are cutting.

Using too deep of a setting can cause the cutting mat to wear out and can adversely affect cutting performance.

When manually moving the cutting carriage, use caution and move slowly so as not to damage the Silhouette hardware.

For any questions or concerns contact Silhouette Customer Service at [support@silhouetteamerica.com](mailto:support@silhouetteamerica.com)

# Where to Find More Information

## Complete User's Manual

View the complete, illustrated User's Manual within Silhouette Studio® by clicking Help -> User's Manual.

## Website

Visit the tutorials section of [www.silhouetteamerica.com](http://www.silhouetteamerica.com) for help with specific features and step-by-step instructions on how to cut different media types with the Silhouette Curio™.

## Blog

Visit the official Silhouette blog at [blog.silhouetteamerica.com](http://blog.silhouetteamerica.com) for ideas of new projects you can create. Many blog posts contain step-by-step instructions for advanced uses of Silhouette products and software.

## Newsletter

Sign up for the Silhouette newsletter at [www.silhouetteamerica.com](http://www.silhouetteamerica.com) to receive product updates and special offers via email.

## Customer Service

If you have any further questions, feel free to contact customer service:

Silhouette America, Inc.  
[support@silhouetteamerica.com](mailto:support@silhouetteamerica.com)  
(800) 859-8243 (US only)  
(801) 983-8937